

2003 IBC SHEAR WALL SCHEDULE			
WALL TYPE	MINIMUM SHEATHING	SHEATHING NAILING	ANCHOR BOLTS
▲	1/4" OSB	8d • 4" O.C. EDGES 8" O.C. FIELD	5/8" • 32" O.C.
▲	1/4" OSB	8d • 3" O.C. EDGES 6" O.C. FIELD 17/32" x AT ADJOINING PANELS 10d • 6" O.C. SHD TO SHD STAGGERED	5/8" • 24" O.C.
▲	1/4" OSB	8d • 3" O.C. EDGES 6" O.C. FIELD x AT ADJOINING PANELS STAGGER SHEAR NAILING	5/8" • 18" O.C.
▲	2 3/8" STRUCTURAL I	1/4" COLLON W/ 2 ROWS FASTENERS 7/16" PER IN. • 12" MAX. SPACING x AT ADJOINING PANELS STAGGER SHEAR NAILING	5/8" • 18" O.C.

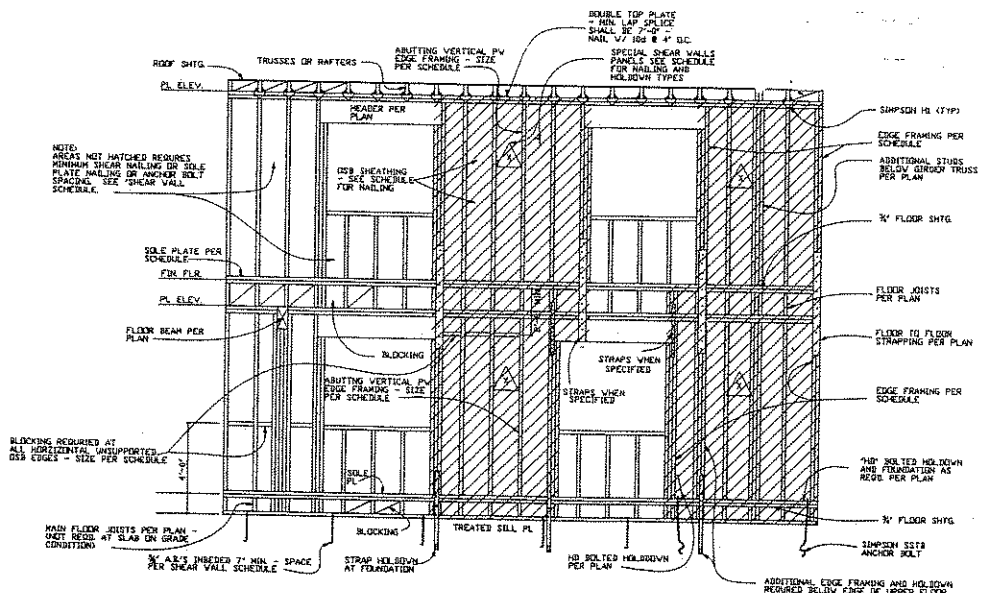
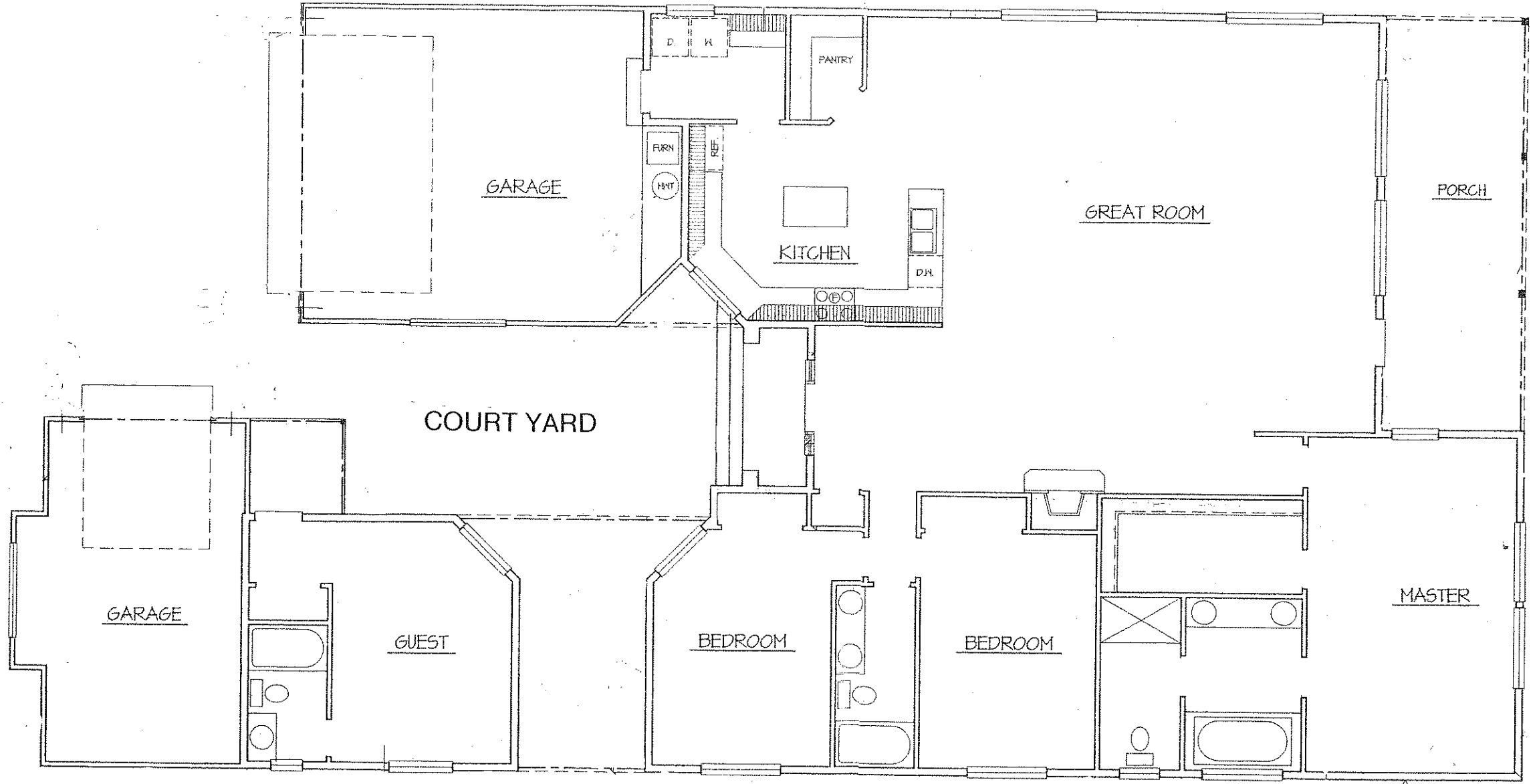
▲ SHEAR WALLS DESIGNATED WITH AN ASTERISK MAY BE SHEATHED WITH THE
 1. SOLE PLATE AND TOP PLATE NAILING PER NAILING SCHEDULE (TABLE 2304.5.1)
 TOP PLATE TO RAFTER WITH SIMPSON H.
 2. ANCHOR BOLTS SHALL INCLUDE STEEL PLATE WASHERS A MIN. OF 3/16" x 2 1/2"
 BETWEEN SILL PLATE & MIT. THERE SHALL BE A MIN. OF (2) BOLTS PER SILL PLATE
 PLATE LOCATED WITHIN 1" BUT NOT CLOSER THAN 4" OF EACH END. (IBC 2309.3.10)
 3. SILL PLATES RESISTING A DESIGN LOAD GREATER THAN 350 PLF HAVE HAD
 THE BOLT SPACING REDUCED TO AVOID USING 3X SILL PLATES.
 PER IBC 2309.3.10 EXCEPTION
 4. SHEATH ALL EXTERIOR WALLS AS ▲ UNLESS NOTED OTHERWISE.

NAIL SIZE INFORMATION UNLESS NOTED OTHERWISE	
8d • 0.131" dia. x 1-1/2" long	10d • 0.148" dia. x 3-1/2" long
10d • 0.167" dia. x 3-1/2" long	

2003 IBC HOLD-DOWNS SCHEDULE			
MARK	SIMPSON (PRODUCT) CAPACITY	ATTACHMENT	NOTES
SHD/RU	SHD28 OR SHD38 RU (OR PHD 3 SUBSTITUTION) 2302	W/ 2x4x6/d TO (2) STUDS	USE RU FOR RFT JOIST 10d • 6" O.C. STD TO STD
SHD/RU	SHD14 OR SHD18 RU (OR PHD 5 SUBSTITUTION) 4302	W/ 2x4x6/d TO (2) STUDS	USE RU FOR RFT JOIST 10d • 6" O.C. STD TO STD
HOD2	HOD2 (20) SDS W/ (2) 2x MEMBERS 175	1/4" DIA. ANCHOR SETS PER 4"x3" WOOD SCREWS	SIMPSON OR 1" BOLT w/ PENETRATION HOOKING (2) 1/4"
HOD2	HOD2 (24) SDS W/ 2x4x6 MEMBER 317	1/4" DIA. ANCHOR SETS PER 4"x3" WOOD SCREWS	1" DIA. ANCHOR w/ BOLT w/ PENETRATION HOOKING (2) 1/4"
HOD2	HOD2 (30) SDS W/ 2x4x6 MEMBER 350	1/4" DIA. ANCHOR SETS PER 4"x3" WOOD SCREWS	1" DIA. ANCHOR w/ BOLT w/ PENETRATION HOOKING (2) 1/4"

2003 IBC STRAPS SCHEDULE			
STRAPS NOT REQUIRED FOR BALLOON FRAMING			
CM	CM STRAPS 2450# CAPACITY	TO (1) STUD W/ (34) 10d EACH	LENGTH • CLEAR SPAN • 38"
STC64B3	STC64B3 3810# CAPACITY	TO (2) STUDS W/ (38) 10d EACH	FACE (4) 10d BOTTOM (4) 10d

5. BRACED WALL PANEL TOP AND BOTTOM PLATES SHALL BE FASTENED TO JOISTS RAFTERS OR FULL DEPTH BLOCKING. BOTTOM PLATE FASTENING TO JOIST OR BLOCKING BELOW SHALL NOT BE LESS THAN (3) 1/4" x 6" WOOD BLOCKING SHALL BE NAILED TO THE TOP PLATE BELOW WITH NOT LESS THAN (3) 8d TOPNAILS PER BLOCK. BOTTOM PLATES TO THE TOP PLATES SHALL BE NAILED TO THE TOP PLATE WITH NOT LESS THAN 8d TOPNAILS • 6"
 6. FLOOR SHEATHING: 23/32" TAG OSB w/ 10d • 6" O.C. AT PANEL EDGES AND 1" O.C. IN FIELD
 7. PROVIDE SOLID BLOCKING AT ALL BEARING LOCATIONS 2322.06.F1



TYPICAL SHEARWALL CONFIGURATION (USE HOLD-DOWNS SHOWN WHEN SPECIFIED)

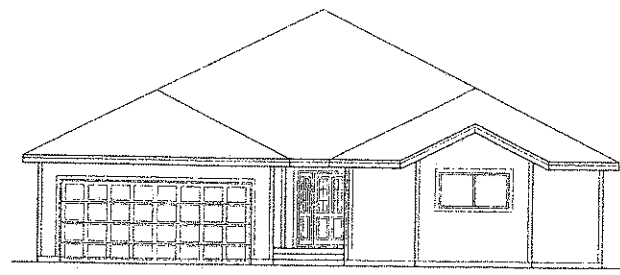
MAIN FLOOR LATERAL ENGINEERING

DO NOT SCALE (1/4"=1')

SHEATH ALL EXTERIOR WALLS AS ▲ UNLESS NOTED OTHERWISE.

BUILDER TO DETERMINE IF SHD OR SHD/RU IS APPROPRIATE. ADJUST CRAWL SPACE VENTS TO BE 2" MINIMUM AWAY FROM HOLD-DOWNS.

SHD EDGE DISTANCE 1-1/2" MIN.



LATERAL ENGINEERING ONLY
 GRAVITY LOAD ENGINEERING
 (BEAMS, FOUNDATION, ETC.) BY OTHERS

PERMITTING JURISDICTION
 TAKES ALL RESPONSIBILITY
 FOR ENGINEERING SHEETS
 NUMBERED 23-1-17

NOT FOR PERMIT